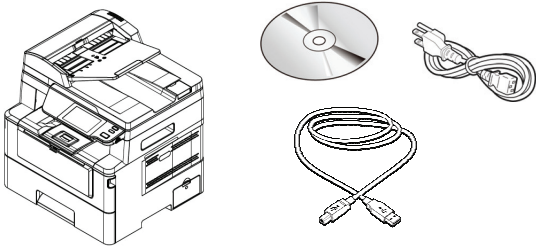
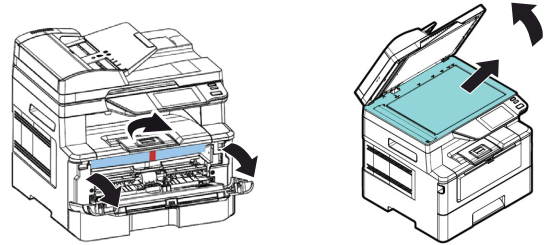




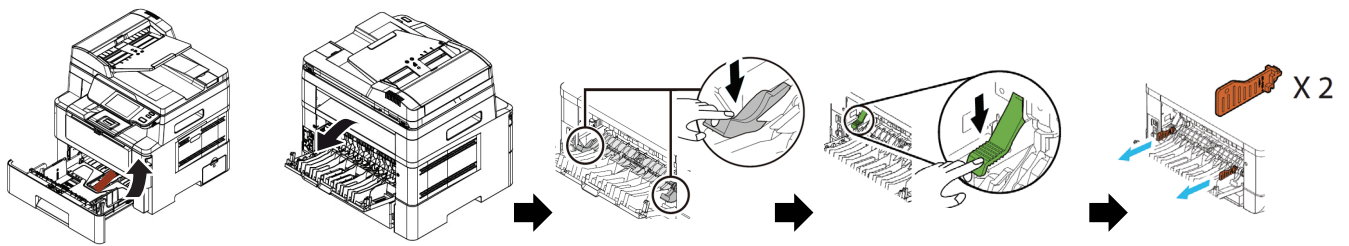
**1 包装内容**



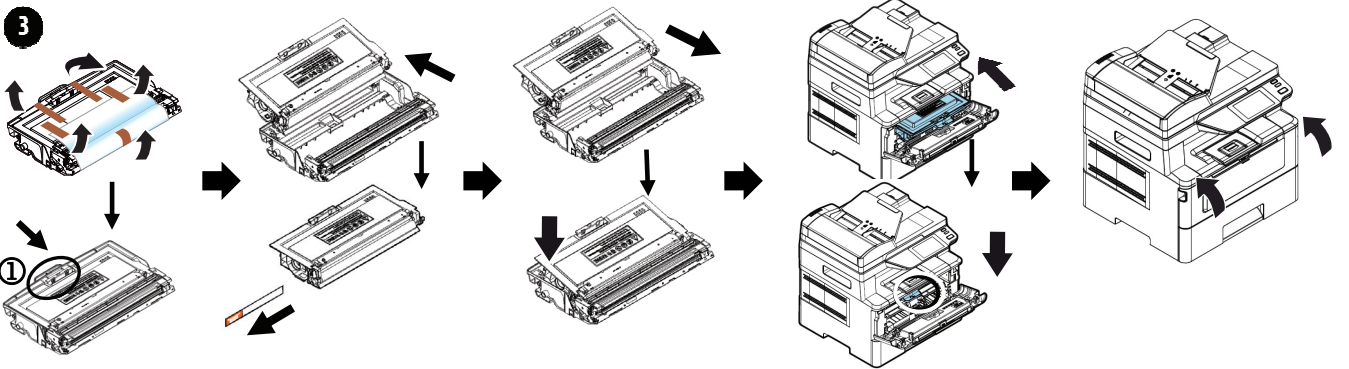
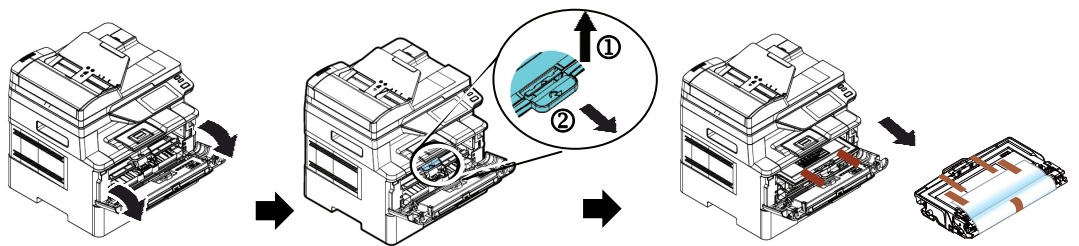
**2 移除包装材料**



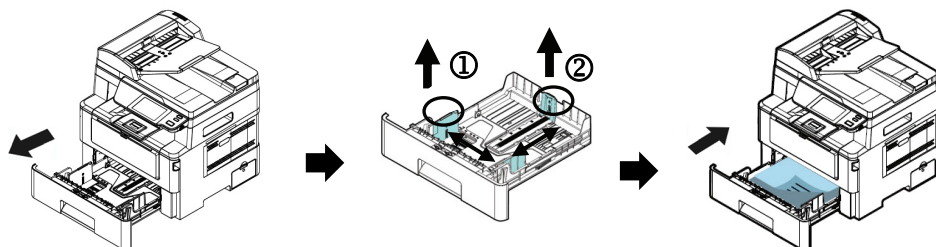
**2 移除包装材料与垫片**



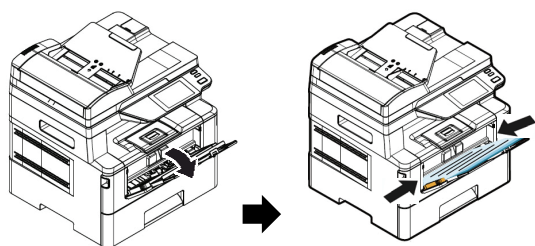
**3 移除墨粉盒与硒鼓的红胶、保护膜、与封条**



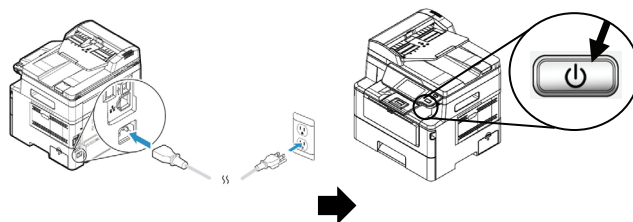
#### 4 将纸张装入主要纸盒



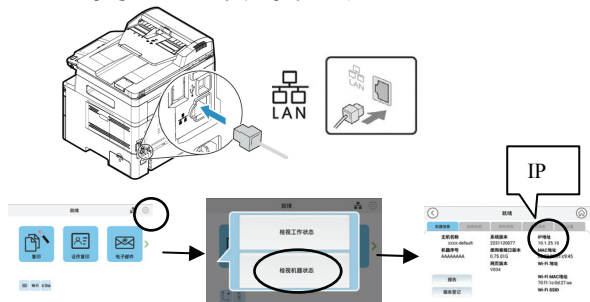
#### 5 将纸张装入手动纸盒



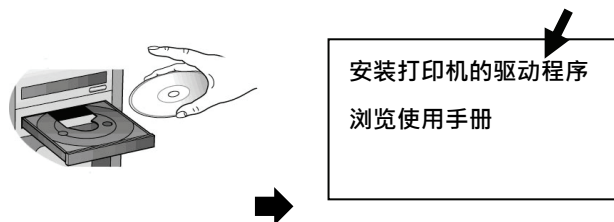
#### 6 连接电源并开启电源



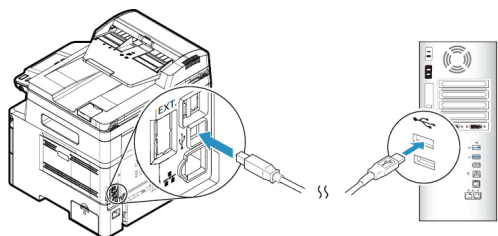
#### 7 通过网络连接计算机



#### 8 安装打印机的驱动程序



#### 9 通过 USB 端口连接计算机



#### ! 更多操作的细节，请参考光盘内的使用手册。

